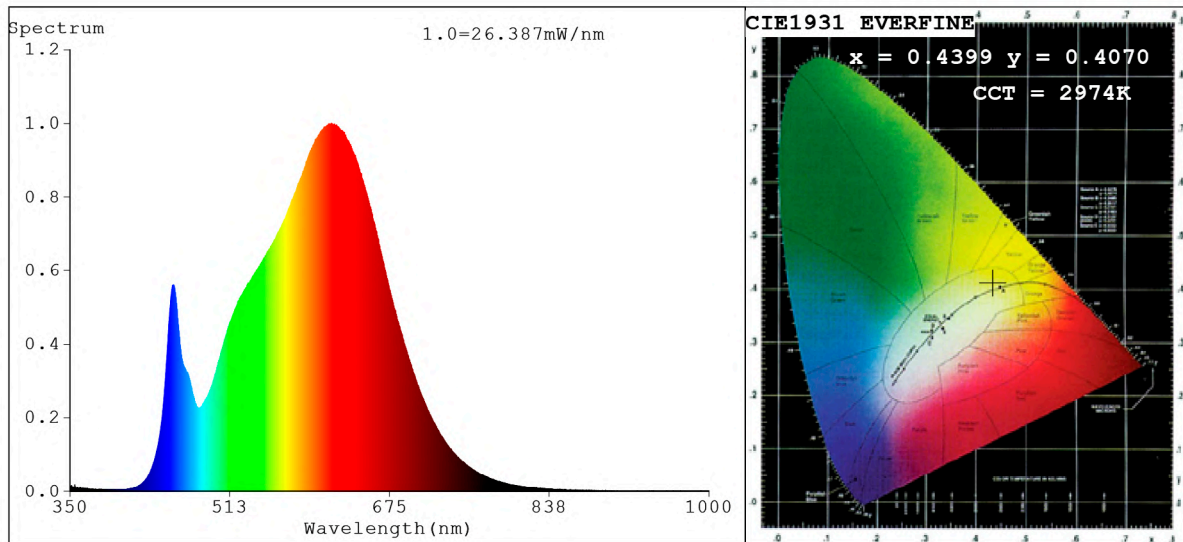


Spectrum Test Report



Color Parameters:

Chromaticity Coordinate: $x=0.4399$ $y=0.4070$ $u'=0.2512$ $v'=0.5230$
 CCT=2974K (Duv=0.0008) Dominant WL: $\lambda_d = 582.7\text{nm}$ Purity=54.2%
 Ratio: R=24.1% G=73.1% B=2.8%; Peak WL: $\lambda_p = 616.1\text{nm}$ FWHM=161.1nm
 Render Index: Ra=91.1 CRI=87.5 TM30: Rf=89 Rg=98
 R1 =91 R2 =95 R3 =98 R4 =90 R5 =90 R6 =94 R7 =91
 R8 =79 R9 =52 R10=88 R11=91 R12=76 R13=92 R14=99 R15=86

Photo Parameters:

Flux = 1330 lm Eff. : 90.77 lm/W Fe = 4.560 W Scotopic: 1847.6 S/P: 1.3888

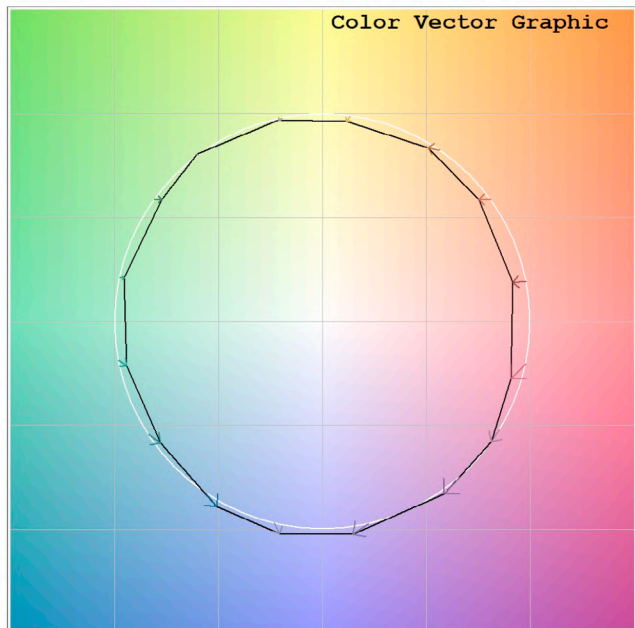
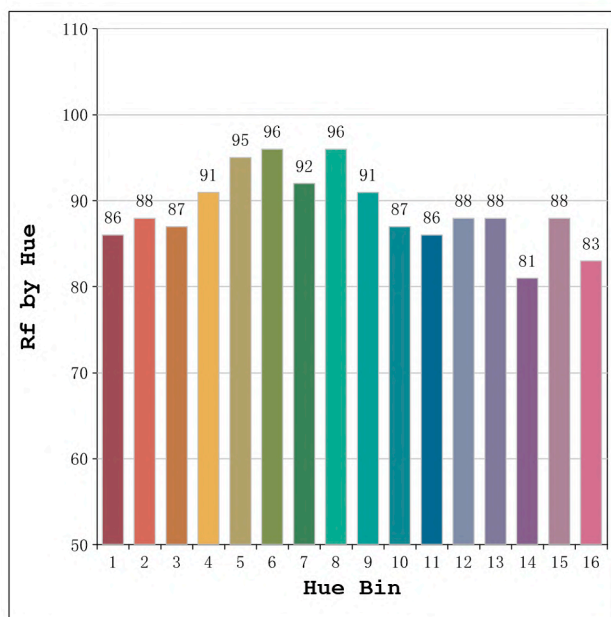
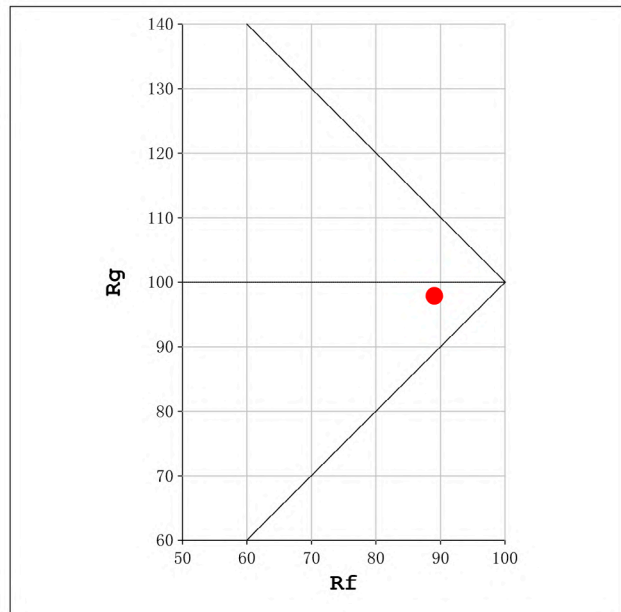
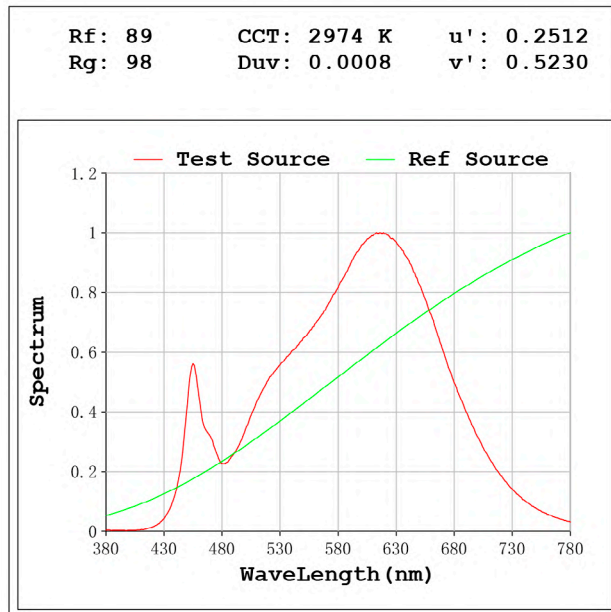
Electrical parameters:

V = 23.998 V I = 0.6107 A P = 14.66 W PF = 1.000

Status: Integral T = 1000 ms Ip = 47456 (72%)

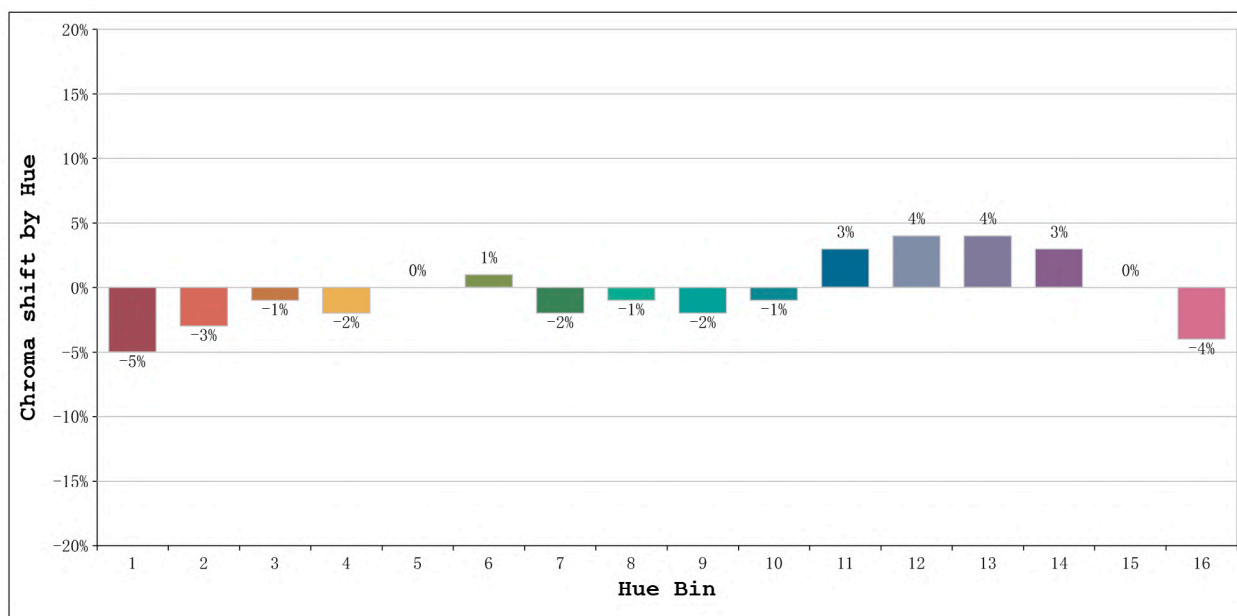
Model: Ecoled COB 3000K
 Tester: Sergio Carneros
 Temperature: 21Deg
 Manufacturer: Luz Negra

Number: 31.003
 Date: 25-5-2021
 Humidity: 57%
 Remarks: 100cm de tira flexible



Model:Ecoled COB 3000K
 Tester:Sergio Carneros
 Temperature:21Deg
 Manufacturer:Luz Negra

Number: 31.003
 Date:25-5-2021
 Humidity:57%
 Remarks:100cm de tira flexible



Hue Bin	Hue Angle	Rf	Graphic shift(%)	
			Chroma	Hue
1	0.0° - 22.5°	86	-5	1
2	22.5° - 45.0°	88	-3	3
3	45.0° - 67.5°	87	-1	5
4	67.5° - 90.0°	91	-2	1
5	90.0° - 112.5°	95	0	2
6	112.5° - 135.0°	96	1	0
7	135.0° - 157.5°	92	-2	-1
8	157.5° - 180.0°	96	-1	0
9	180.0° - 202.5°	91	-2	3
10	202.5° - 225.0°	87	-1	7
11	225.0° - 247.5°	86	3	8
12	247.5° - 270.0°	88	4	4
13	270.0° - 292.5°	88	4	-7
14	292.5° - 315.0°	81	3	-10
15	315.0° - 337.5°	88	0	-6
16	337.5° - 360.0°	83	-4	-8

Model:Ecoled COB 3000K
Tester:Sergio Carneros
Temperature:21Deg
Manufacturer:Luz Negra

Number: 31.003
Date:25-5-2021
Humidity:57%
Remarks:100cm de tira flexible